



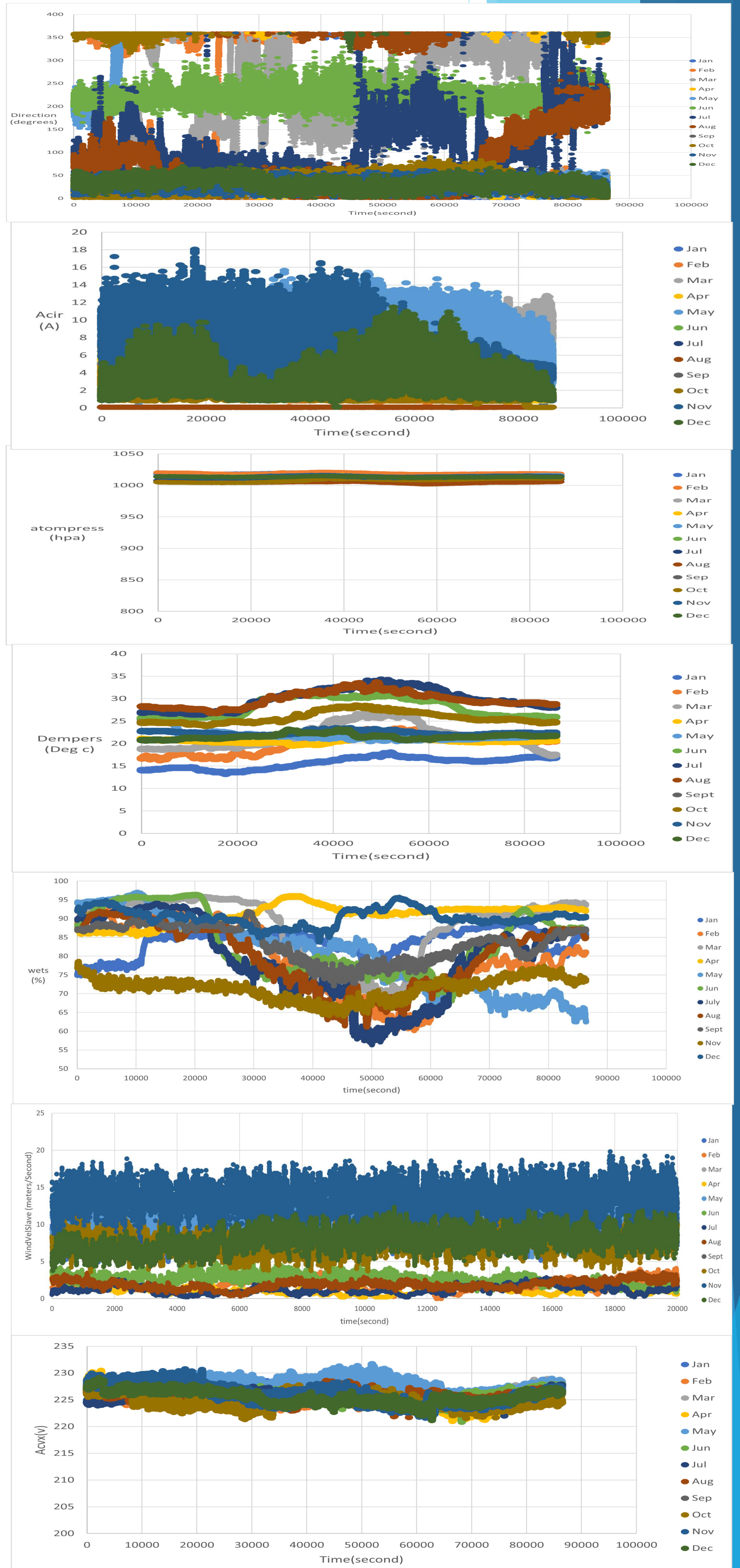
## 壹. 簡介

通過使用監控方法來控制和管理風力渦輪機的運行和性能的過程，實時採集、分析和處理風機運行數據的統計和技術，從而保證風力發電系統的高效傳輸和可靠性。

監控系統使用傳感器和數據採集設備設置來收集風力渦輪機的運動數據，例如風速、轉速、發電量、溫度等。

然後對收集到的數據進行分析和處理，以提取有用的信息和見解。這包括例如風速和風向的趨勢分析、風機運行狀態的監測、故障檢測和預測等。

## 肆. 結果與討論



## 參考文獻

- Hsu, M. H., & Zhuang, Z. Y. (2022). An intelligent detection logic for fan-blade damage to wind turbines based on mounted-accelerometer data. *Buildings*, 12(10), 1588.
- P. J. B. Tan and M. -H. Hsu, "Diagnosis of faults in wind power generation systems," 2016 IEEE 11th Conference on Industrial Electronics and Applications (ICIEA), Hefei, China, 2016, pp. 1459-1462, doi: 10.1109/ICIEA.2016.7603815.
- M. -H. Hsu, P. J. B. Tan and C. -C. Chao, "Condition monitoring and fault detection of wind turbines generator," 2018 IEEE International Conference on Applied System Invention (ICASI), Chiba, Japan, 2018, pp. 1218-1221, doi: 10.1109/ICASI.2018.8394508.
- Zheng-Yun Zhuang, Ming-Hung Hsu, 2022, Local Regression Method (LRM) for Pre-processing the Vibration Data of Wind Turbines.